



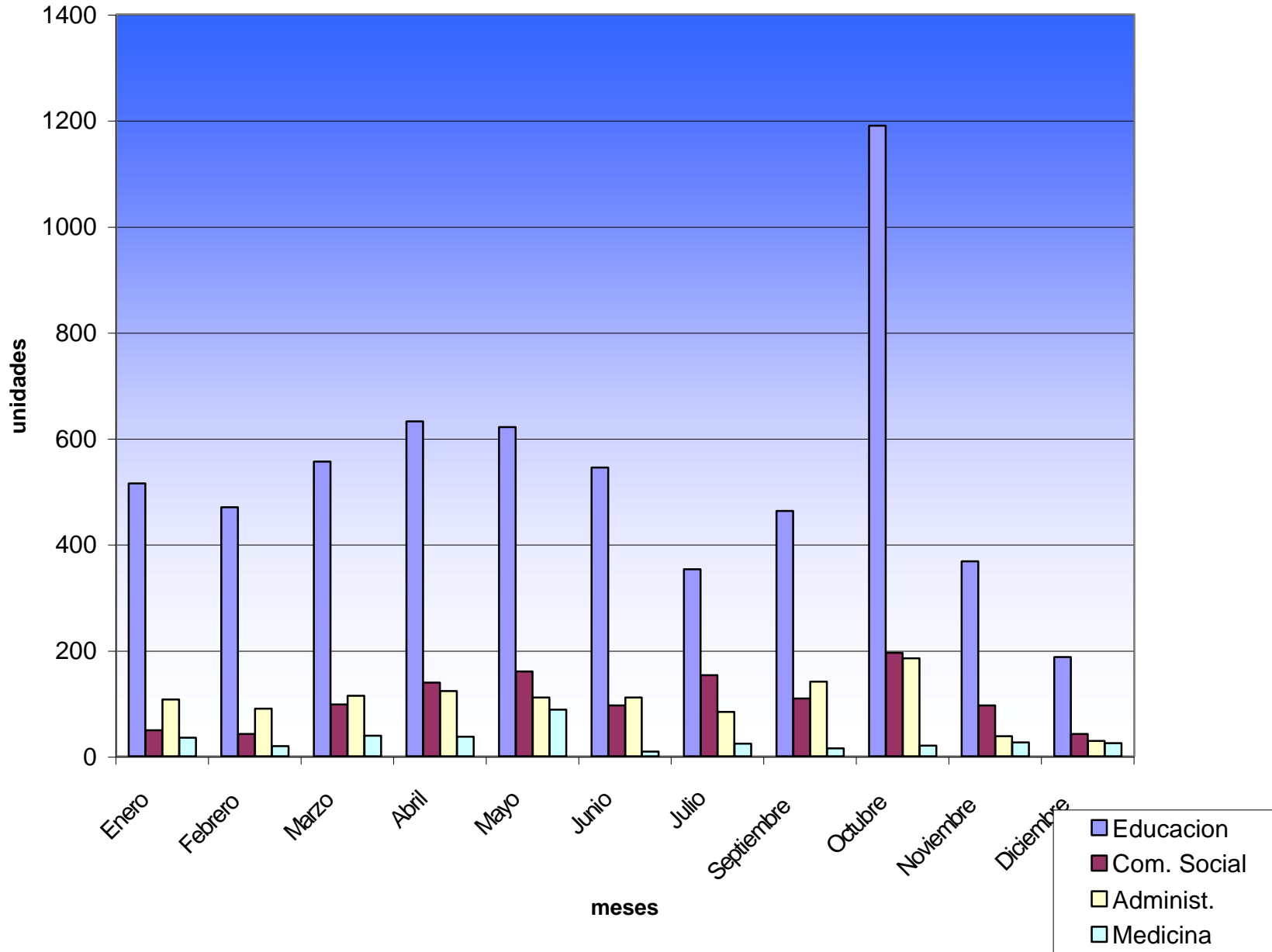
|               | Ener   | Febr   | Marz   | Abri   | Mayo   | Juni   | Juli   | Sept   | Octu   | Novi   | Dici      | Total Produ |
|---------------|--------|--------|--------|--------|--------|--------|--------|--------|--------|--------|-----------|-------------|
| Disquete      | 33000  | 9000   | 19500  | 27000  | 28500  | 22500  | 15000  | 4500   | 19500  | 13500  | 4500      | 196500      |
| Quemado       | 4800   | 3200   | 3200   | 3200   | 8000   | 4800   | 17600  | 0      | 27200  | 6400   | 4800      | 83200       |
| Cd            | 2000   | 48000  | 20000  | 4000   | 16000  | 8000   | 20000  | 4000   | 76000  | 20000  | 18000     | 236000      |
| Cd+Quema      | 11200  | 8400   | 0      | 19600  | 11200  | 33600  | 25200  | 11200  | 0      | 0      | 0         | 120400      |
| Zip           | 0      | 0      | 0      | 0      | 0      | 0      | 0      | 0      | 0      | 0      | 0         | 0           |
| Acetato       | 3600   | 0      | 0      | 0      | 3600   | 7200   | 0      | 0      | 5400   | 3600   | 0         | 23400       |
| B/N Economi   | 199000 | 55500  | 261500 | 263000 | 342000 | 410000 | 236500 | 264500 | 656000 | 174500 | 32000     | 2894500     |
| B/N Normal    | 0      | 0      | 0      | 0      | 0      | 0      | 0      | 0      | 0      | 0      | 0         | 0           |
| color Eco     | 102000 | 91000  | 55000  | 26000  | 51000  | 121000 | 67000  | 3000   | 58000  | 98000  | 98000     | 770000      |
| color Normal  | 0      | 0      | 0      | 0      | 0      | 0      | 0      | 0      | 0      | 0      | 0         | 0           |
| Scanner       | 0      | 0      | 0      | 0      | 1500   | 500    | 1000   | 0      | 1500   | 0      | 18500     | 23000       |
| Sc.Impr.Color | 0      | 0      | 0      | 0      | 0      | 0      | 0      | 0      | 0      | 0      | 0         | 0           |
| Carp.Transp   | 3500   | 1400   | 700    | 1400   | 1400   | 4900   | 2800   | 2800   | 3500   | 2100   | 7700      | 32200       |
| Cartulina     | 1200   | 3000   | 0      | 0      | 0      | 600    | 1200   | 0      | 0      | 9600   | 8400      | 24000       |
| Total Bs      | 360300 | 219500 | 359900 | 344200 | 463200 | 613100 | 386300 | 290000 | 847100 | 327700 | 191900    | 4403200     |
|               |        |        |        |        |        |        |        |        |        |        | <b>Bs</b> | 4403200     |

**Relacion Insumos Enero a Diciembre 2007  
Sala de Computacion ULA Tachira - OPSU**





# Usuarios atendidos 2007





Universidad de Los Andes Tachira - Sala de Computacion  
 Proyecto Alma Mater  
 Estadística Anual de Insumos 2007



|                  | Ene    | Febr   | Mar    | Abri   | Mayo   | Juni   | Juli   | Sept   | Octu   | Novi   | Dici   | Total   |
|------------------|--------|--------|--------|--------|--------|--------|--------|--------|--------|--------|--------|---------|
| Disquetes        | 22     | 6      | 13     | 18     | 19     | 15     | 10     | 3      | 13     | 9      | 3      | 131     |
|                  | 33000  | 9000   | 19500  | 27000  | 28500  | 22500  | 15000  | 4500   | 19500  | 13500  | 4500   | 196500  |
| QuemadodeCd      | 6      | 4      | 4      | 4      | 10     | 6      | 22     | 0      | 34     | 8      | 6      | 104     |
|                  | 4800   | 3200   | 3200   | 3200   | 8000   | 4800   | 17600  | 0      | 27200  | 6400   | 4800   | 83200   |
| C.D              | 1      | 24     | 10     | 2      | 8      | 4      | 10     | 2      | 38     | 10     | 9      | 118     |
|                  | 2000   | 48000  | 20000  | 4000   | 16000  | 8000   | 20000  | 4000   | 76000  | 20000  | 18000  | 236000  |
| CD+Quemado       | 4      | 3      | 0      | 7      | 4      | 12     | 9      | 4      | 0      | 0      | 0      | 43      |
|                  | 11200  | 8400   | 0      | 19600  | 11200  | 33600  | 25200  | 11200  | 0      | 0      | 0      | 120400  |
| Zip              | 0      | 0      | 0      | 0      | 0      | 0      | 0      | 0      | 0      | 0      | 0      | 0       |
|                  | 0      | 0      | 0      | 0      | 0      | 0      | 0      | 0      | 0      | 0      | 0      | 0       |
| Acetatos         | 2      | 0      | 0      | 0      | 2      | 4      | 0      | 0      | 3      | 2      | 0      | 13      |
|                  | 3600   | 0      | 0      | 0      | 3600   | 7200   | 0      | 0      | 5400   | 3600   | 0      | 23400   |
| Impre.B/N Econ.  | 398    | 111    | 523    | 526    | 684    | 820    | 473    | 529    | 1312   | 349    | 64     | 5789    |
|                  | 199000 | 55500  | 261500 | 263000 | 342000 | 410000 | 236500 | 264500 | 656000 | 174500 | 32000  | 2894500 |
| Imp.B/N Normal   | 0      | 0      | 0      | 0      | 0      | 0      | 0      | 0      | 0      | 0      | 0      | 0       |
|                  | 0      | 0      | 0      | 0      | 0      | 0      | 0      | 0      | 0      | 0      | 0      | 0       |
| Imp. Color Econ. | 102    | 91     | 55     | 26     | 51     | 121    | 67     | 3      | 58     | 98     | 98     | 770     |
|                  | 102000 | 91000  | 55000  | 26000  | 51000  | 121000 | 67000  | 3000   | 58000  | 98000  | 98000  | 770000  |
| I.Color Normal   | 0      | 0      | 0      | 0      | 0      | 0      | 0      | 0      | 0      | 0      | 0      | 0       |
|                  | 0      | 0      | 0      | 0      | 0      | 0      | 0      | 0      | 0      | 0      | 0      | 0       |
| Scanner          | 0      | 0      | 0      | 0      | 3      | 1      | 2      | 0      | 3      | 0      | 37     | 46      |
|                  | 0      | 0      | 0      | 0      | 1500   | 500    | 1000   | 0      | 1500   | 0      | 18500  | 23000   |
| Sca.IColorNorm   | 0      | 0      | 0      | 0      | 0      | 0      | 0      | 0      | 0      | 0      | 0      | 0       |
|                  | 0      | 0      | 0      | 0      | 0      | 0      | 0      | 0      | 0      | 0      | 0      | 0       |
| Carpetas.Trans   | 5      | 2      | 1      | 2      | 2      | 7      | 4      | 4      | 5      | 3      | 11     | 46      |
|                  | 3500   | 1400   | 700    | 1400   | 1400   | 4900   | 2800   | 2800   | 3500   | 2100   | 7700   | 32200   |
| Cartulinas       | 2      | 5      | 0      | 0      | 0      | 1      | 2      | 0      | 0      | 16     | 14     | 40      |
|                  | 1200   | 3000   | 0      | 0      | 0      | 600    | 1200   | 0      | 0      | 9600   | 8400   | 24000   |
| Total Bs.        | 360300 | 219500 | 359900 | 344200 | 463200 | 613100 | 386300 | 290000 | 847100 | 327700 | 191900 | 4403200 |

4403200

## Gestion 2007 en bolivares

